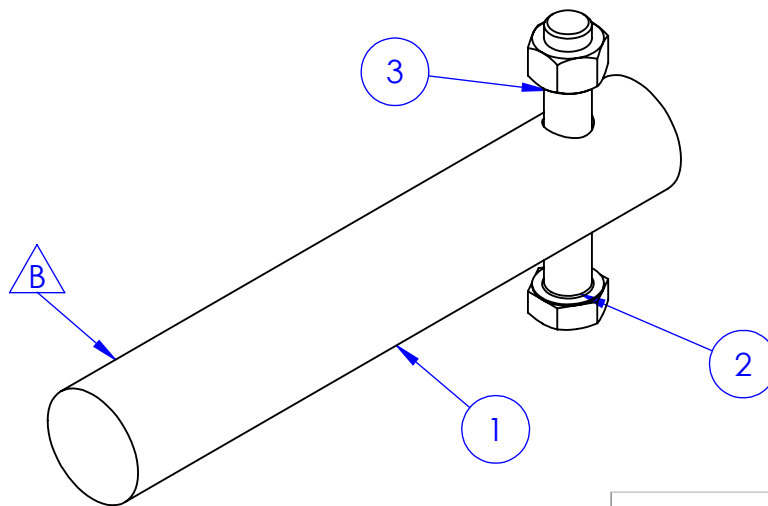
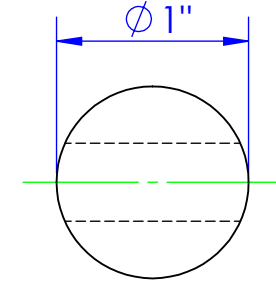
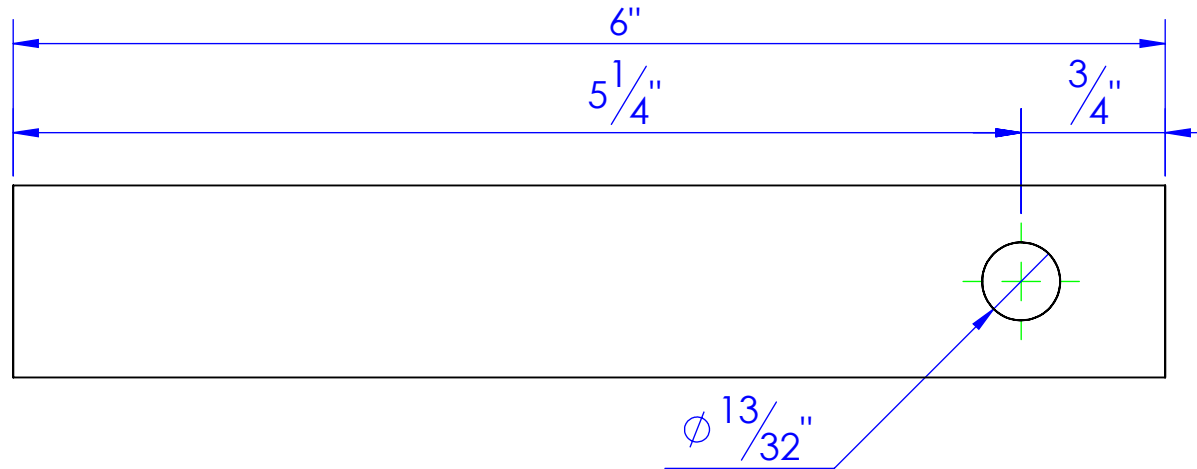


PART NUMBER	DESCRIPTION	MATERIAL
STC-CR NITRO 1 x 6	LENGTH: 6"	NITRO BAR 1"
HFBOLT 0.375-24x2.5x1-C	BOLT 3/8" X 2-1/2	STOCK
HNUT 0.3750-24-D-N	NUT 3/8 HLN	STOCK

	REVISES		
REV.	DESCRIPTION	DATE	APPROVED
B	UPDATED TO MATCH BOM	1/20/2012	



PROPRIETARY AND CONFIDENTIAL
THE INFORMATION CONTAINED IN THIS
DRAWING IS THE SOLE PROPERTY OF TRIPLE
C INC. ANY REPRODUCTION IN PART OR
AS A WHOLE WITHOUT THE WRITTEN
PERMISSION OF TRIPLE C INC. IS PROHIBITED.

DIMENSIONS ARE IN INCHES TOLERANCES: FRACTIONAL ±1/16 ANGULAR: MACH±1 BEND ± TWO PLACE DECIMAL ±010 THREE PLACE DECIMAL ±005		NAME	DATE
		DRAWN	HEATH 1/20/2012
		PART #	RE-PN-1X601
		ASM #	
MATERIAL --		COMMENTS: PIN,HINGE,MAIN, HYDRA BED	
DO NOT SCALE DRAWING		<div><div>TRIPLE</div><div>C</div><div>INC.</div></div>	
SIZE A	DWG. NO. 10-1701 B	REV. B	
SCALE:1:1	WEIGHT: 1.29 LBS.	SHEET 1 OF 1	